

WWW.AMPHIBIOUSMEDICS.COM



**AMPHIBIOUS
MEDICS**

WELLNESS & MEDICAL TEAM BROCHURE
PRESENT AND PREPARED

info@amphibiousmedics.com

877-878-9185

TABLE OF CONTENTS

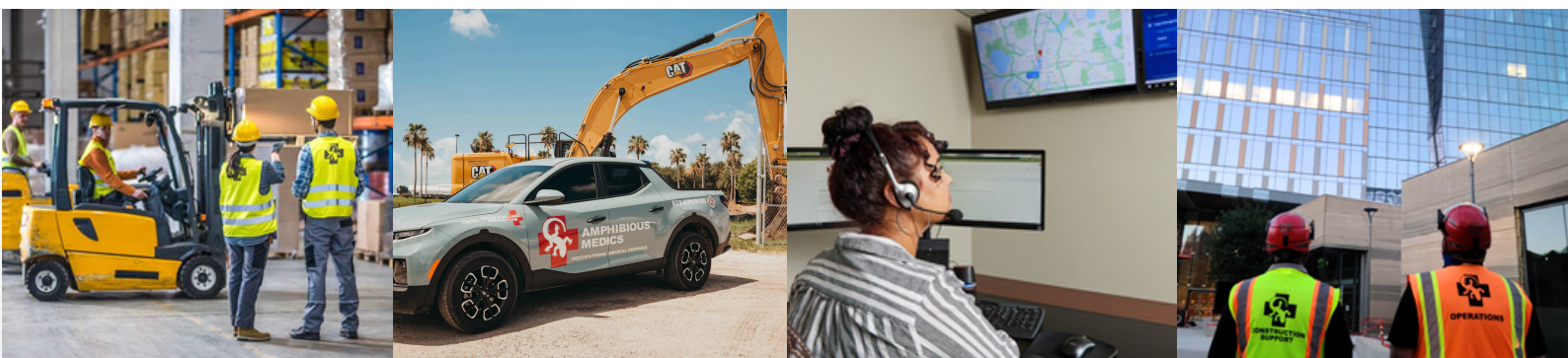
- 02.** Who We Are
- 03.** What We Do
- 04.** On-Site
- 05.** On-Call
- 06.** Rover: Mobile Medical Support Team
- 07.** Meet the Team
- 08.** HSMT: The Front Line of Care
- 09.** HSMT Credentials
- 10.** Our Objectives
- 11.** Health and Wellness
- 12.** Care Management Timeline
- 13.** Care Management
- 14.** Ancillary Services
- 15.** Medical Professionals
- 16.** Equipment and Supplies
- 17.** Benefits of Utilizing Amphibious Medics

WHO WE ARE

At Amphibious Medics, we recognize that the well-being of employees is not confined to the mere absence of illness; it encompasses physical vitality, mental fortitude, and a comprehensive approach to health and wellness. We have curated an approach that seamlessly integrates **Health and Wellness, Mental Health First Aid, and Advanced First Aid** into a coherent strategy, adeptly bridging the gap between OSHA Recordables and medical treatment utilizing Health and Safety Medical Technicians (HSMT) to achieve this goal.

Our brochure outlines our comprehensive program, designed to be the cornerstone of your organization's occupational health initiatives. Our multifaceted approach is poised to revolutionize how health and well-being are perceived and nurtured within the workplace.

From preventive measures to advanced care, Amphibious Medics is committed to catalyzing a paradigm shift that will enhance your employees' welfare and drive productivity to unprecedented heights.



Amphibious Medics stands ready to deploy a cadre of medically licensed and certified across-all-tiers EMTs, Paramedics, Athletic Trainers, Registered Nurses, and Physician Assistants to ensure a seamless match to your location's requirements. Whether your project is compact or expansive, our commitment remains unwavering – providing expert support that spans from an individual medically credentialed professional to multi-tiered on one location.

This is why our company motto is **Present and Prepared!**

WHAT WE DO

AMPHIBIOUS MEDICS SERVICE VERTICALS

On-Call:

On-Demand first aid medical support. You call us, and we send a licensed medical professional to your site.

On-Site:

A dedicated full-time, on-site first aid, health, and wellness program allows for the most effective injury mitigation and case management.

Rover:

An industry-leading blend of On-Site and On-Call. A dedicated medical professional in an SUV or Van drives around a predetermined geographic area providing first aid and health and wellness services.

ON-SITE

By reacting and assessing the moment an incident occurs, Amphibious Medics can determine the best course of action for each incident.

When our HSMT is On-Site, they are better able and more equipped to determine a course of action and care. This On-Site presence has proven countless times to reduce unnecessary off-site treatment, worker's compensation claims, lost time incidents, and recordables. This is backed by proven client data from over 15 years of experience.

Should the incident require a higher level of care, Amphibious Medics is uniquely situated to prepare the employee and Safety Manager for what to expect in a clinic or hospital setting. In some instances, Amphibious Medics can even escort the employee to the predesignated clinic or hospital. This allows the Site Safety Managers to remain On-Site and assists in the prevention of over-treatment. Additionally, it allows the client an advocate in the documentation and return to work process.

Safety Team Administrative Support

Social integration and open communication between our staff and our client's team is a critical component to the success of everyone's safety program. When your HSMT is not interacting with injured or sick employees, they are trained to actively participate in your EHS program and are available to provide collateral support for duties as requested. These duties may include site walks, filing hot work permits, I.D. badging, holding site safety orientations, conducting pre-employment drug screening, completing fire extinguisher inspections, and reviewing and finalizing insurance forms.

On-Site Expectations:

- Immediate reaction to incidents, expediting care and service abilities
- A full-time certified HSMT that is trained in OSHA standards, and carrying an OSHA 30 card
- An extra member of the Safety Team trained and eager to assist in any site safety function

ON-CALL

The introduction of the On-Call program was a direct response to our clients who saw the value of our On-Site program, but whose budget couldn't support a full-time, on-site HSMT.

Every On-Call Incident will have multiple Amphibious Medics personnel involved to ensure the fastest and most efficient service available.

Utilizing our IRAMP program, you can rest assured that your first-aid incident won't result in an unnecessary recordable, or worse a time-loss worker's comp claim.

Every On-Call incident is assigned a dedicated Coordinator who will act as the Incident Commander. They will be the liaison between your site personnel and Amphibious Medics' higher Medical Directorship (if necessary), and provide the incident paperwork upon call completion. This gives our clients the peace of mind that they will have the ability to communicate and update changes during the incident.

On-Call Expectations:

- Coverage for our client's employee population, regardless of a project location or size
- 24/7/365 Dedicated Dispatch Center—Immediate activation of service for any incident
- 24/7/365 Dedicated Medical Coordinator—Our client's point of contact throughout the incident

Incident Follow-Up Services

As proven through our On-Site protocols, following up with your injured employee is critical in maintaining a mitigated status. After the HSMT has treated the injured employee, and returned the injured employee back to work, Amphibious Medics can provide a thorough follow-up on the employee's injury to aid in tracking recovery and maintaining non-recordable status.

The follow-up program will help guide the outcome of the incident beyond the initial contact with our HSMT. By maintaining constant communication with the injured employee, Amphibious Medics staff are perceived as trusted advisors through the duration of the healing process, and through resolution and closure of the case. In addition, follow-ups provide the benefit of helping to avert someone from seeking outside treatment by a third party after the initial treatment of the incident. These services have been found to have the greatest effect on maintaining non-recordable status.

ROVER: MOBILE MEDICAL SUPPORT TEAM

Like the On-Call program, the Rover program was created out of direct client needs and feedback. A unique blend of Amphibious Medics' On-Site and On-Call services, the Amphibious Medics Rover is available to clients with a concentration of projects in one area.

Fully equipped mobile units act as clinics on wheels, able to respond to a client site at a moment's notice, or park for the day to offer On-Site Safety and Health and Wellness clinics.

The Rover offers Area and Regional Safety Managers the ability to truly be in two places at one time.

One-of-a-Kind Industry Operations

The Rover HSMT will be assigned to serve and respond to a regional cluster of sites within the coverage area. In collaboration with the client, and accounting for geography, traffic constraints, and human factors, the coverage area will be defined to reduce response time to an agreed-upon standard.

A flexible, rotating schedule will be developed between Amphibious Medics and the client to promote the visibility of the projects with the greatest need and defined in a manner that best serves the client's EHS goals. Ever flexible, this schedule will have the ability to be modified to suit the changing environments of each of the sites being served in the coverage area.

At the heart of the Rover program is the Rover HSMT Vehicle. This mobile clinic enables the area HSMT to react at a moment's notice to all incidents within the coverage area. An active incident will take priority over the scheduled day-to-day tasks. In the event of multiple concurrent incidents, the Amphibious Medics On-Call services can be activated and another HSMT can respond.

Rover Expectations:

- Enhanced On-Site services spread out over a cluster of locations
- On-Call incident reaction to fit the budget with costs spread out over multiple client locations
- Mitigation of potential recordables for multiple sites

MEET THE TEAM

Amphibious Medics possesses the knowledge and expertise, backed by a complete team of wellness and medical professionals. We collaborate to establish a population health management approach, offer medical oversight, ensure quality assurance, and provide ongoing supervision to guarantee the achievement of your desired outcomes.

On-Site:

HSMT- Selected by Amphibious Medics in collaboration with the Site Team

Case Officer

**Regional Operations
Administrator**

Assistant Operations Director

Medical Director

On-Call & Rover:

Responder- Selected by Amphibious Medics in collaboration with the Site Team

On-Call Coordinator

Assistant Operations Manager

Director of On-Call Operations

Medical Director

When you contract with Amphibious Medics, you gain more than an on-site HSMT. You gain a partnership.

HSMT: LEADING THE FRONT LINE OF CARE

Amphibious Medics is not merely a conventional medical practitioner on a construction site; we have transformed into an advanced paradigm of Health and Safety Medical Technicians (HSMTs). These HSMTs embody a profound shift from reactive treatment to a proactive ethos, infusing our services with strategic preventive medicine.

HSMTs offer more than just first aid; they bring a comprehensive approach that encompasses preventive strategies. With initiatives such as stretch and flex programs, Mental Health First Aid, and occupational medicine, we prioritize fostering lasting and meaningful relationships with both employees and employers within the field.



HSMT CREDENTIALS

All HSMTs assigned to the project will hold the medical licensure or certification required by the contract.

At a minimum, full-time HSMTs will be certified in:

- OSHA 30
- Health and Wellness Biometric Screenings
- IRAMP
- Mental Health First Aid Awareness
- 4-Hour Scaffolding Awareness

At a minimum, part-time HSMTs will be certified in:

- OSHA 10
- Health and Wellness Biometric Screenings
- IRAMP
- Mental Health First Aid Awareness
- 4-Hour Scaffolding Awareness

Injury Recordability Avoidance and Mitigation Program (IRAMP)

Our unique and proprietary protocols are written to the OSHA-300 standard. This certification equips our staff to navigate the distinctions between traditional medical treatment settings and the complexities of the construction environment.

*Additional training will be provided as per contractual agreements or specific requirements mandated by local municipalities.

OUR OBJECTIVES

- 01.** Wellness Program: Provide on-site training, exercises, and guidance to prevent common workplace injuries, especially musculoskeletal issues in addition to Health and Wellness exams.
- 02.** Performance Enhancement: Enhance worker performance through tailored fitness routines and exercises that improve strength, flexibility, and endurance.
- 03.** Holistic Approach: Integrate mental health practices to reduce stress, and anxiety, and promote overall mental well-being among workers.
- 04.** Site Partnerships: Organize group activities and workshops to foster camaraderie and teamwork, contributing to a positive workplace culture.
- 05.** Fostering Social Integration: Cultivate a cohesive bond with both the employees and employers on your project by actively engaging in the field alongside the team.
- 06.** EHS Coordinator: As appropriate, provide EHS support that includes a diverse range of tasks, from conducting site assessments and facilitating hot work permits to supervising ID badging, leading site safety orientations, conducting fire extinguisher inspections, reviewing insurance documents, and offering aid to the site safety manager as deemed necessary. This all-encompassing approach guarantees a seamless integration across a multitude of safety-focused responsibilities.

HEALTH AND WELLNESS

Our **comprehensive** program is individually crafted to empower our clients in cultivating a workplace that prioritizes the health and safety of their employees. Recognizing the physical demands and mental challenges naturally confronting your employees, we have curated a spectrum of services aimed at enhancing the workplace culture.

HEALTH AND WELLNESS INITIATIVES:

Comprehensive Worksite Assessment:

Our expertise extends to a meticulous evaluation of your worksite, pinpointing potential hazards, and proposing strategies to elevate workplace safety.

Holistic Wellness Initiatives:

Our array of wellness programs spans a spectrum of options, aiding your employees in nurturing a wholesome lifestyle. We empower your workforce to enhance their physical and mental well-being with programs including:

- Stretch and Flex program (Site-wide, trade, company, individual)
- Stop and Focus (Breathing exercises designed to reduce stress)

Convenient On-Site Health Expositions:

We extend our services directly to your workplace through our on-site wellness clinics by providing individual and site-wide wellness challenges. Health assessments, educational wellness workshops, nutritional guidance, and site-wide wellness challenges are all part of our comprehensive approach to promoting a culture of well-being in your workplace.



CARE MANAGEMENT TIMELINE



Efficient Assessment: Our case management for injuries begins with a swift and thorough assessment of the incident, identifying the nature and extent of the injury.



Tailored Care Plan: Based on the assessment, we create a personalized care plan, outlining the necessary medical treatments, rehabilitation, and accommodations to ensure the best possible recovery.



Continuous Monitoring: Our dedicated team monitors the injured individual's progress, making necessary adjustments to the care plan as needed to facilitate a smooth recovery process.



Open Communication:

Throughout the entire journey, we maintain open communication with our client, their carriers, and brokers, providing updates on the individual's progress and collaborating to ensure a successful return to work.



Comprehensive Drug & Alcohol Screening:

Amphibious Medics is equipped to oversee a comprehensive drug and alcohol screening program. Our services encompass pre-employment, reasonable suspicion, randomized, and post-incident instant drug and alcohol screening. Moreover, we provide the added assurance of Medical Review Officer (MRO) involvement in cases of suspected non-negatives.



Physician Medical Direction

Amphibious Medics maintains Physician Medical Direction in all states as allowed by law. Secondary consultations are readily available upon request.

CARE MANAGEMENT

STREAMLINED OFF-SITE CLINIC COLLABORATIONS:

When circumstances necessitate off-site treatment and a referral becomes essential, Amphibious Medics maintains partnerships with local clinics. This service for our On-site and Rover clients aids in identifying the optimal third-party facility and ensuring an efficient alliance for advanced off-site care. By managing these affiliations and coordinating with local EMS agencies, we aid the provision of appropriate off-site treatment, focusing on expediting the return to work and curbing excessive treatment.



Amphibious Medics collaborates closely with carriers, brokers, and claims management teams, fostering transparency and preventing any unexpected developments in first reports and off-site treatments. Our comprehensive return-to-work programs and diligent follow-ups help prevent surprises or undisclosed treatments throughout the process. This assurance is upheld through consistent communication with the injured employee and your off-site claims management team. We proactively inform carriers and actively participate in monthly meetings to provide updates on the progress of injured parties, ensuring that all team members are well-informed.

ANCILLARY SERVICES

A range of accessible ancillary services for your on-site staff. We offer diverse ancillary services to cater to your staff's on-site needs.

THESE SERVICES INCLUDE: (NOT LIMITED TO)

First Aid/ CPR:

Training initiatives to ensure that your team possesses essential life-saving expertise and abilities.

Bloodborne Pathogens

Certifications: Comprehensive training programs ensure your staff has crucial lifesaving skills and knowledge.

Mental Health First Aid:

Training programs to enhance awareness and understanding of mental health issues, enabling your team to provide appropriate support.

Stretch and Flex Programs: Tailored programs designed for subcontractors and the entire workforce, fostering flexibility and well-being.

Opioid and Fentanyl Awareness: Educational initiatives are raising awareness about the risks associated with opioids and fentanyl.

Narcan Administration: Training in administering Narcan to address opioid overdoses and save lives in critical situations.

Our mission is to ensure that your staff has access to comprehensive services that contribute to their well-being and safety, supporting a healthier and more productive work environment.

MEDICAL PROFESSIONALS



EMERGENCY MEDICAL TECHNICIAN-BASIC (EMT-B)



PARAMEDIC (EMT-P)



ATHLETIC TRAINER (AT)



REGISTERED NURSE (RN)



PHYSICIAN ASSISTANT (PA)







EQUIPMENT AND SUPPLIES

Amphibious Medics has fully stocked Gear Kits with supplies available at each site. This Gear Kit will have all the necessary tools and equipment to treat all first-aid injuries on-site. These supplies have all been specifically selected to maximize the responding HSMTs ability to treat an injury at a First Aid level and maintain non-recordable status. All gear kits received from Amphibious Medics become the property of the Client. However, Amphibious Medics will work with the Client to replenish the required and most used supplies when needed. Each Amphibious Medics supplied gear kit includes:

- Diagnostic Equipment
- Capital Equipment
- Bleeding Management Supplies
- Consumable First Aid Supplies
- Various OTCs



BENEFITS OF UTILIZING AMPHIBIOUS MEDICS

-  REDUCED RISK OF INJURIES, LEADING TO DECREASED ABSENTEEISM AND INCREASED PRODUCTIVITY.
-  IMPROVED WORKER MORALE, JOB SATISFACTION, AND OVERALL WELL-BEING.
-  ENHANCED TEAMWORK AND COMMUNICATION THROUGH TEAM-BUILDING ACTIVITIES.
-  POSITIVE IMPACT ON COMPANY REPUTATION AS A SAFETY-CONSCIOUS AND EMPLOYEE-CENTRIC ORGANIZATION.

This brochure of our services and holistic approach to mental health and preventive injuries will significantly contribute to your construction site workers' overall health and well-being. By investing in their physical and mental health, you are investing in the success and sustainability of your organization.



**AMPHIBIOUS
MEDICS**

 **THE AMPHIBIOUS GROUP**



**AMPHIBIOUS
MEDICS**



**SAVI
EHS**